



LESLIE CONTROLS

STEM LENGTH AND SENSITIVITY ADJUSTMENT

TYPES PDA-1 PDW-1 PDQ-1

CONSTANT PRESSURE PILOT CONTROLLERS

FORCE BALANCE, FIXED BAND TYPES

ADJUSTMENT PROCEDURE

Supply 20-22 psig operating pressure to the pilot controller. Turn adjusting nut to compress adjusting spring to set upper diaphragm against its top limit stop. If possible remove fluid pressure from top of diaphragm, if not compress spring sufficiently to overcome fluid pressure and move diaphragm to stop.

ADJUSTING RESPONSE SENSITIVITY

Remove extension pin, pilot cover and diaphragm nozzle disc.

For Normal Response Sensitivity adjust pilot controller for very minor or no leak off. To do this relieve pressure of blade spring on nozzle stop by pressing lightly downward on it with finger. Then screw nozzle stop downward until it is felt to barely seat on nozzle nut.

For Supersensitive Response adjust pilot controller for continuous leak off. To do this slowly screw nozzle stop further downward until operating pressure flow is just detectable through nozzle bleed port. To check amount of leak off place finger lightly over nozzle bleed port to seal air (do not press down on nozzle). Air pressure in output line to diaphragm control valve should not build up any faster than 3-5 psig in 20-30 seconds. Lock nozzle stop with blade spring.

To Test Pilot Controller Body and Diaphragm Control Valve for response press downward on center of nozzle until 20-22 psig air pressure registers on output gauge. Control valve should move through full travel. Release nozzle. Air output pressure should drop to 0 psig and control valve should return to its original position.

After completing sensitivity adjustment replace diaphragm nozzle disc, extension pin and pilot cover.

STEM LENGTH ADJUSTMENT

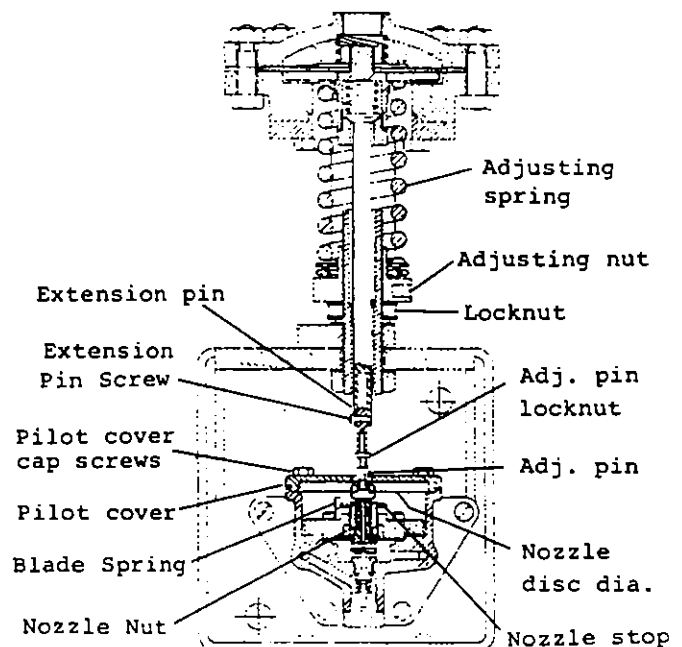
Desired pilot controller performance will be obtained only if the upper (sensing) diaphragm is operating at or near its mean position, i.e. half way between its top and bottom limit stops in base and cover. Its position is determined by adjusting length of adjusting pin.

NOTE: THIS ADJUSTMENT IS FACTORY SET and should not be disturbed unless it is obvious that the original setting has been changed or major parts replacements were made which may cause need for readjustment.

These adjustments can be made when the pilot controller is set for either continuous or non-continuous leak off.

PDA-1, PDW-1, PDQ, PILOT CONTROLLERS

1. Loosen locknut on adjusting pin. Turn adjusting pin downward toward pilot body until 0-3 psig air pressure shows on output gauge.
2. Then turn adjusting pin back upward into extension pin (away from pilot body) 1 turn for all low pressure pilots (up to and including the 50-125 psig range); 1-3/4 turns for high pressure pilots (ranges 100-200 psig and over). Tighten locknut.



PLAY SAFE! USE ONLY GENUINE LESLIE REPLACEMENT PARTS

LESLIE CONTROLS, INC., TAMPA, FL 33637